

Twisco

SLT 415
Evolution

The Pocket Telehandler

- Transportable
- Compact
- Mœuvrable
- Rough terrain




 **MANITOU**

Twisco SLT 415 Evolution

 **Lifting capacity**1500 kg
(500 mm load centre)


 **Lifting height**3.98 m
Max. front reach.....2.14 m

 **Tyres**
Front and rear.....10 x 16,5 10 PR SKS
Option HT :.....tyres 31 x 15,5 - 15

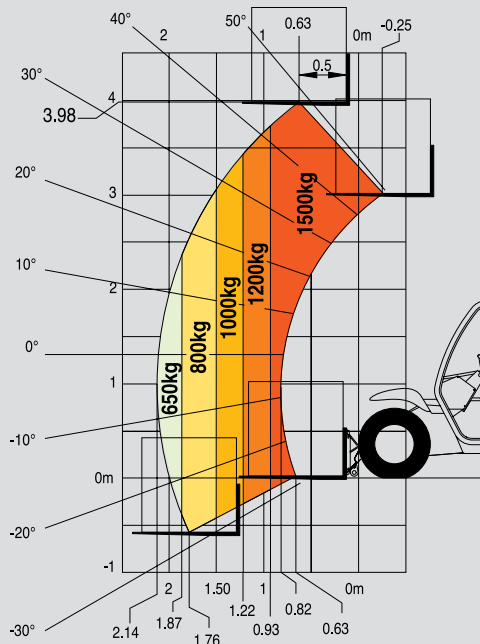
 **Perkins 404 C22 engine**
Capacity4 cyl. - 2216 cm3
Power(ISO/TR 14396) 50 HP/38 kw
Rated speed.....2800 r.p.m
Max. torque143 Nm at 1800 r.p.m
Coolingwater

 **Transmission**hydrostatic
3 wheel drive
Reversing shift on FNR lever
Travel speed :13.5 km/h
Parking brakeson front wheels

 **Hydraulic**
Main geared pump250 bar/40 L/mn

 **Weight (with forks)**2520 kg
Overall width.....1662 mm
Overall height.....1900 mm
Turning radius (rear wheel axle).....2225 mm
Turning circle2380 mm
Drawbar pull(laden).....1890 daN
Ground clearance258 mm

This publication in no way constitutes an offer and the company reserves the right to alter specification without prior notice.
The MANITOU models presented in this brochure can be supplied complete with optional equipment attachments.



Rough terrain standard EN 1459 B



"FNR" lever



Transportable